



# The Asuris Personalized Care Support Program

Compassionate palliative care for significant injury or serious illness

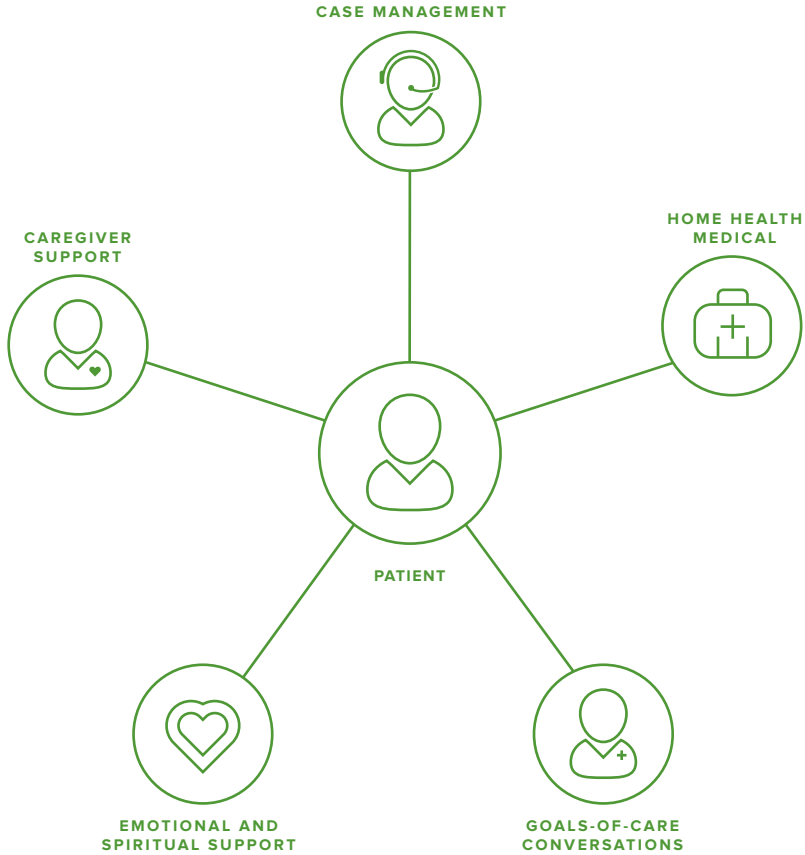


Health care that's patient-centered, family-oriented and compassionate is especially important for members going through treatment for a serious illness, significant injury or nearing the end of their life.

That's why we provide the industry's most comprehensive integrated palliative care benefit. Our goal: to support members who are receiving relief from the symptoms, pain and stress associated with serious or life-limiting conditions.

The Asuris program is designed for members at any stage of life or illness, with or without treatment meant to cure the condition.

# Asuris Personalized Care Support: there for many needs



## The impact of palliative care needs



Approximately **6,000,000** people in the United States could benefit from palliative care. (CAPC)



According to a 2010 study reported in the New England Journal of Medicine, lung cancer patients receiving early palliative care had less depression, improved quality of life and survived **2.7 months** longer. (CAPC)



Between 65-76% of physicians whose patients had an advance directive were not aware that it existed. (Kass-Bartelmess 2003)

## Who provides palliative care?

Palliative care is provided by a specially trained, interdisciplinary team. We accept claims for reimbursement from any of the following provider types:

- Physicians
- Specialists
- Physician assistants
- Nurses
- Nurse practitioners
- Nursing assistants
- Social workers
- Behavioral health practitioners
- Spiritual care providers

**NOTE:** Asuris provider credentialing requirements must be met, and incident-to billing procedures must be followed.



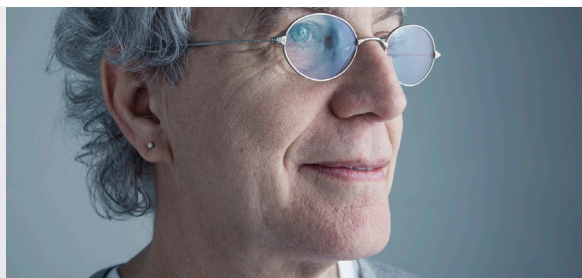
## What do we cover?

Our benefit includes adult and pediatric case management to assist with care coordination and individualized support for caregivers. Our focus is on improving the quality of life for both the patient and their family.

We reimburse providers for:

- Advance care planning: capturing the patient's goals and preferences for care
- Home health medical services: addressing ongoing pain and symptom management
- Home health psychological and social services: family counseling, marital counseling and spiritual support visits

The palliative care benefit is built into our standard Individual, group and Medicare supplement medical coverage at no additional premium cost; there is no special enrollment necessary. The benefits are activated when a physician confirms they are needed. A member can self-refer, or be referred by anyone on their medical care team or their caregiver.



## Working with Asuris Personalized Care Support

In order to provide the best patient-centered palliative care possible, a strong relationship between providers and payers is vital. That's why we take a comprehensive approach to enhancing palliative care among primary and specialty care, hospice and home health providers.

As a payer, Asuris is committed to building innovative partnerships with providers who are dedicated to serving the needs of seriously ill or significantly injured patients and their families.

Our goal is to work with providers to collect quality data, which will inform our reimbursement models, policies and benefit expansion going forward. Our partnerships include a formalized agreement and/or statement of work between Asuris and the provider.

Contact us for:

- Training
- Presentations
- Provider and consumer engagement support
- Pilot and research proposals

### Find out more about the program:

[https://www.asuris.com/web/asuris\\_provider/personalized-care-support](https://www.asuris.com/web/asuris_provider/personalized-care-support)

### Contact us for program information:

[PalliativeCare@asuris.com](mailto:PalliativeCare@asuris.com)

### To refer someone, call the Case Management Intake Line:

1 (866) 543-5765





Asuris Northwest Health  
528 East Spokane Falls Boulevard, Suite 301 | Spokane, WA 99202

ANH-130359-17/05-PROVIDER  
© 2017 Asuris Northwest Health

Asuris complies with applicable Federal civil rights laws and does not discriminate on the basis of race, color, national origin, age, disability, or sex.

ATENCIÓN: si habla español, tiene a su disposición servicios gratuitos de asistencia lingüística. Llame al 1-888-232-8229 (TTY: 711).

注意：如果您使用繁體中文，您可以免費獲得語言援助服務。請致電 1-888-232-8229 (TTY: 711).